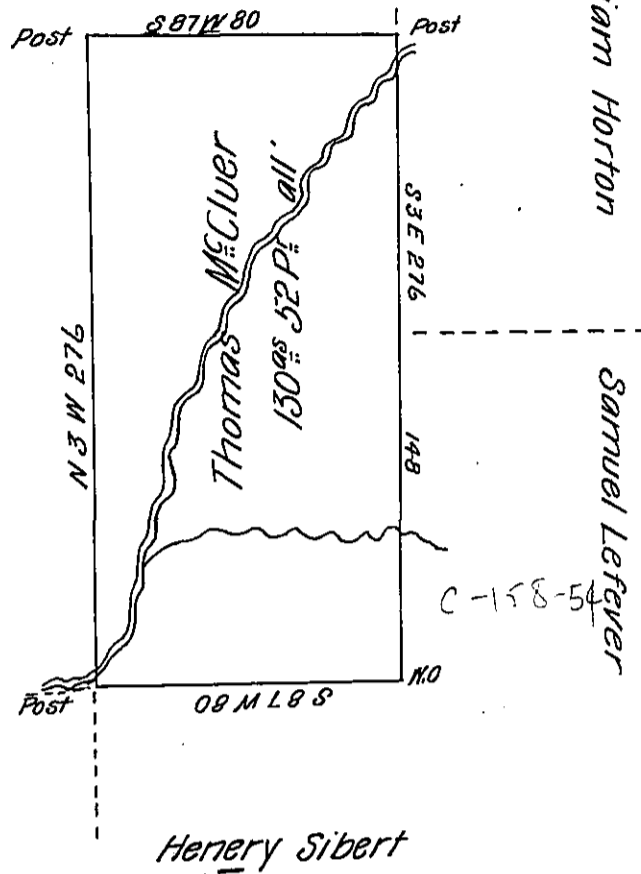


Randolph Lawrance

C-119-121



In Pursuance of a Warrant granted to Thomas McCluer dated the 22<sup>nd</sup> day of Feby 1836. Was Surveyed the 21<sup>st</sup> day of April 1836 the above described tract of land containing one hundred and thirty acres and fifty two perches and allowance of six P & C. & C. Situate in Sugar creek township Armstrong County on Sugar Creek.

Thomas Barr D.S

To Jacob Spangler Esq. S. G.

IN TESTIMONY that the above is a copy of the original remaining on file in the Department of Internal Affairs of Pennsylvania, made conformably to an Act of Assembly approved the 16th day of February, 1833, I have hereunto set my Hand and caused the Seal of said Department to be affixed at Harrisburg, this sixth day of February 1906.

*Francis J. [Signature]*  
Secretary of Internal Affairs.